

# LOGSET FOREST MACHINE LINEUP

HARVESTERS / FORWARDERS / HARVESTER HEADS



**LOGSET**  
SIMPLY BETTER

# WELCOME TO LOGSET WORLD

## ALL BLACK

Logset machine  
30th year a  
model was  
you see ma  
Black mach  
back in 202

T

### **ALL BLACK**

Logset machines turned black in 2022 for 30th year anniversary models. Anniversary model was presented with gold decals, you see many of those in this brochure. Black machines got their purple accent back in 2023.



# FORWARDERS



## HOT POINTS: WHAT MAKES A LOGSET?

**ENGINE** Strong and trustworthy ACGO Power diesel engines made in Linnanvuori, Finland. In our Logset philosophy, it is to have lots of power capacity, which we use wisely. Fuel consumption is low, and we always have power capacity when needed. SCR engine technology makes our engines run cleaner with reduced emissions.

**HYDRAULICS** Logset machines are well known for hydraulic simplicity. Everything is designed to minimize power consumption and keep the power output and durability at its maximum level. Carefully designed hydraulics, which help to keep all the oil temperatures, pressures- and oil feed requirements in more controlled for reduced consumption.

**CABIN** Everyone who has ever used Logset's cabin has experienced its quality. Spacious and has an ergonomically designed cab with good all-around views of all of its wheels and operating environment. Top-level basic functions such as its robust heating/air-conditioning system, seating, joysticks, ergonomically adjustability, and storage compartments. Extra options like an integrated food heater or Smooth HIFI system really save long days.

**CRANE** Strong Mesera cranes are designed to load and unload with ease. Based on the machine model and the boom options, the outreach is possible to choose from 7,2 to 10 meters, and the lifting moment varies between 106 and 178 kNm. Integrated hoses are also available as an option.

**BOGIES** All Logset machines are equipped with NAF bogies and gear boxes.

**TOC 2, TOTAL** Logset machines controlled by our system, TOC 2. The ability to customize give you a flexible machine. All machines controlled by TOC 2 as durability, production consumption are



cranes are  
load with ease.  
model and the  
which is possible  
meters, and  
between 106  
hoses are also

achines are  
s and gear



**SEVEN MODELS** covers all the cut-to-length operations areas around the world. Agile and short-in-length models are for thinning and with lighter loads, mid-sized machines for greater loads with reasonable weight, and the biggest machines for the maximum capacity. Different forested continents and operations require their own machine specialties, thus our machines can be equipped for every operation and its regional needs.

SMALL AND AGILE **4F**



ALL-ROUND **5F**



ALL-ROUND WITH POWER **5FP**



ENTRY-LEVEL BIG MACHINE **6F**



STRONG AND STABLE **8F**



CAPACITY AND STRENGTH **10F**



GIANT **12F**



**LOGSET FORWARDERS ARE BUILT** for only one purpose: Get the maximum productivity out of the forest with the minimum cost – constantly day by day. With sufficient power and tractability, durability, low fuel consumption, and low emissions are a core focus for Logset. These machines are also designed with easy maintenance in mind – which reduces lost forestry working hours.

The operator is the most essential part of successful forestry and timber hauling. A strong and functional machine also needs utilities that help the operator to make the most out of the forest. Great ergonomics, easy control, and good visibility are the essentials.

**TOC 2, TOTAL OPERATION CONTROL**

Logset machines are operated and controlled by our advanced control system, TOC 2. Easy control and the ability to customize your control layout give you a flexible way to drive the machine. All machine functions are controlled by TOC 2, good things such as durability, productivity, and fuel consumption are coded into TOC 2.

**TRACTIVE EFFORT**

Logset forwarders are known to keep the pace up in all conditions. Hydrostatic transmission gives that great performance in difficult terrains. Powerful, accurate, and reliable movement is a key factor to keep production up when it's needed.

**LOAD BAY**

A strong and durable load bay has a wide range of options to suit your needs. Lots of variations for different operations, with one characteristic with them all: Robust construction and mechanicals are built to last for heavy-duty use.

**TANKS**

Logset forwarders are designed to work long days without refueling. Daily maintenance is also well-planned, routine refills and checks are easy and quick to do. Optimal hydraulic oil tank size ensures the lifespan of hydraulic components.

# 4F GT



LOAD  
CAPACITY **10<sup>t</sup>**

OWN  
WEIGHT **13,5<sup>t</sup>**

ENGINE  
POWER **190<sup>HP</sup> 140<sup>KW</sup>**

CRANE  
OPTIONS **7,2/10<sup>M</sup>**

TRACTIVE  
EFFORT **13<sup>t</sup>**



**THE SMALLEST FORWARDER** in the Logset machine range. The machine has a loading capacity of 10 tons, and it is specially designed for thinning operations in dense forests. Due to its small size, the Logset 4F GT literally floats on various types of terrain with minimum ground damage.

Although the Logset 4F GT is a compact forwarder, it is powerful: the 4.9-liter AGCO Power engine develops 140 kW (190 hp). Available with the Mesera 83 crane with 106 kNm lifting capacity. The crane is available with two different length options for a customized reach.

## LOGSET 4F GT

### DIMENSIONS

Own weight, from	13 500 kg (30 000 lbs)
Load capacity	10 000 kg (22 000 lbs)
Load area	3,85 m <sup>2</sup>
Load area length	4,15 m (163", 13.6 ft)

### ENGINE

Type	AGCO Power 49 LFTN
Stage	EPA Tier 4 final, EU Stage V
Power at 1900 rpm	140 kW (190 hp)
Torque at 1500 rpm	800 Nm (590 ft lb)
Fuel tank	188 l (49 US gal)
DEF	30 l (8 US gal)

### TRANSMISSION

Type	Hydrostatic mechanical
Tractive effort	135 kN (30 300 lbf)
Gear box	2 gears

### HYDRAULIC SYSTEM

Pump size	140 cm <sup>3</sup>
Pressure	23 Mpa
Hydraulic oil tank	175 l (46 US gal)

### CABIN

Control system	TOC 2
Battery voltage	24 V
Options	Smooth Ride, Smooth HIFI
Safety tested and approved	

### TYRES

Standard	710/40-22.5
Optional	600/50-22.5

### CRANE

Mesera crane options	Mesera 83 F
Reach options	7,2/10 m (23.6/32.8 ft)
Lifting capacity	106 kNm (78 100 ft lb)
Rotator	360°

### OPTIONAL EQUIPMENTS

Contact your local dealer for more information.

10<sup>M</sup>

TRACTIVE EFFORT **135<sup>KN</sup>**

# 5F GT EVO

## 3.3



LOAD  
CAPACITY **12<sup>t</sup>**

OWN  
WEIGHT **16<sup>t</sup>**

ENGINE  
POWER **190<sup>HP</sup> 140<sup>KW</sup>**

CRANE  
OPTIONS **7,2/10<sup>M</sup>**

TRACTIVE  
EFFORT **1**



### LIGHTWEIGHT & HEAVY-DUTY

The compact 12-ton forwarder is our most sold forwarder model. The large 26,5" tires and the high ground clearance make this machine the right choice for diverse types of terrain, including soft, swampy-type areas.

The new 3.3 version has a more rigid front body that gives better traction, especially with heavy loads. A shorter front body is designed with more of an angle, so as to climb out from steep ditches and drive on hilly terrain. The bonnet is narrower and shorter with even a better view. Logset cab's view has always been one of its key benefits.

Logset 5F GT 3.3 is a versatile and compact forwarder. It is extremely well adapted for thinning operations but is also suitable for small clear-felling operations. The forwarder is compact, so turning in tight areas is easy without compromising the ground clearance. The Logset 5F GT is very reliable and does not consume a lot of spare parts. Thanks to these features, it has exceptionally low running costs.

## LOGSET 5F GT

### DIMENSIONS

Own weight, from	16 000 kg (35 200 lbs)
Load capacity	12 000 kg (26 400 lbs)
Load area	4 - 4,75 m <sup>2</sup>
Load area length	4,15 m (163", 13.6 ft) 4,75 m (187", 15.6 ft)

### ENGINE

Type	AGCO Power 49 LFTN
Stage	EPA Tier 4 final, EU Stage V
Power at 1900 rpm	140 kW (190 hp)
Torque at 1500 rpm	800 Nm (590 ft lb)
Fuel tank	188 l (49 US gal)
DEF	30 l (8 US gal)

### TRANSMISSION

Type	Hydrostatic mechanical
Tractive effort	171 kN (38 400 lbf)
Gear box	2 gears

### HYDRAULIC SYSTEM

Pump size	140 cm <sup>3</sup>
Pressure	23 Mpa
Hydraulic oil tank	175 l (46 US gal)

### CABIN

Control system	TOC 2
Battery voltage	24 V
Options	Smooth Ride, Smooth HIFI
Safety tested and approved	

### TYRES

Standard	710/45-26.5 600/55-26.5
Optional	800/40-26.5

### CRANE

Mesera crane options	Mesera 83 F
Reach options	7,2/10 m (23.6/32.8 ft)
Lifting capacity	106 kNm (78 100 ft lb)
Rotator	360°

### OPTIONAL EQUIPMENTS

Contact your local dealer for more information.

/10<sup>M</sup>

TRACTIVE EFFORT **171** KN

# 5FP GT



LOAD  
CAPACITY **12<sup>t</sup>**

OWN  
WEIGHT **17<sup>t</sup>**

ENGINE  
POWER **230<sup>HP</sup> 169<sup>KW</sup>**

CRANE  
OPTIONS **7,2/10<sup>M</sup>**

TRACTIVE  
EFFORT **17<sup>t</sup>**



## MORE POWER WITH SMALL DIMENSIONS

Logset 5FP GT is a versatile forwarder. It is compact and nimble for thinning operations but has enough power for clearfelling. A 12-ton forwarder has a strong transmission and oversized components for its class. The 6-cylinder 7,4 liter AGCO Power engine has enough torque in all situations but with low fuel consumption. The forwarder maintains the desired driving speed also in demanding conditions.

## LOGSET 5FP GT

### DIMENSIONS

Own weight, from	17 000 kg (37 470 lbs)
Load capacity	12 000 kg (26 400 lbs)
Load area	4 - 4,75 m <sup>2</sup>
Load area length	4,15 m (163", 13.6 ft) 4,75 m (187", 15.6 ft)

### ENGINE

Type	AGCO Power 74 LFTN
Stage	EPA Tier 4 final, EU Stage V
Power at 1850 rpm	169 kW (230 hp)
Torque at 1500 rpm	1000 Nm (740 ft lb)
Fuel tank	188 l (49 US gal)
DEF	30 l (8 US gal)

### TRANSMISSION

Type	Hydrostatic mechanical
Tractive effort	171 kN (38 400 lbf)
Gear box	2 gears

### HYDRAULIC SYSTEM

Pump size	140 cm <sup>3</sup>
Pressure	23 Mpa
Hydraulic oil tank	175 l (46 US gal)

### CABIN

Control system	TOC 2
Battery voltage	24 V
Options	Smooth Ride, Smooth HIFI
Safety tested and approved	

### TYRES

Standard	710/45-26.5 600/55-26.5
Optional	800/40-26.5

### CRANE

Mesera crane options	Mesera 83 F
Reach options	7,2/10 m (23.6/32.8 ft)
Lifting capacity	106 kNm (78 100 ft lb)
Rotator	360°

### OPTIONAL EQUIPMENTS

Contact your local dealer for more information.

2/10<sup>M</sup>

TRACTIVE EFFORT **171** KN

# 6F GT

LOAD  
CAPACITY **14<sup>t</sup>**

OWN  
WEIGHT **18<sup>t</sup>**

ENGINE  
POWER **230<sup>HP</sup> 169<sup>KW</sup>**

CRANE  
OPTIONS **7,9/10<sup>M</sup>**

TRACTIVE  
EFFORT **1**





### WHEN YOU NEED POWER IN COMPACT FORM

The Logset 6F GT has a high capacity and exceptionally low running costs. Load bay length is adjustable between 4 - 5,2 meters. 6F geometry is designed to run large volumes of wood even bit longer distances, and that is where low fuel consumption comes very important for a successful operation.

The main mechanical parts have been reinforced to achieve a long lifespan and to endure challenging conditions. The frames, center joint, bogie attachments, load bay, and solid hood have all been designed for rough forest conditions.

/10<sup>M</sup>

TRACTIVE  
EFFORT **196<sup>KN</sup>**

## LOGSET 6F GT

### DIMENSIONS

Own weight, from	18 000 kg (39 700 lbs)
Load capacity	14 000 kg (30 800 lbs)
Load area	4,85 - 5,85 m <sup>2</sup>
Load area length	4 m (157", 13.1 ft) 5,2 m (205", 17.1 ft)

### ENGINE

Type	AGCO Power 74 LFTN
Stage	EPA Tier 4 final, EU Stage V
Power at 1850 rpm	169 kW (230 hp)
Torque at 1500 rpm	1000 Nm (740 ft lb)
Fuel tank	188 l (49 US gal)
DEF	30 l (8 US gal)

### TRANSMISSION

Type	Hydrostatic mechanical
Tractive effort	196 kN (44 000 lbf)
Gear box	2 gears

### HYDRAULIC SYSTEM

Pump size	140 cm <sup>3</sup>
Pressure	24 Mpa
Hydraulic oil tank	175 l (46 US gal)

### CABIN

Control system	TOC 2
Battery voltage	24 V
Options	Smooth Ride, Smooth HIFI
Safety tested and approved	

### TYRES

Standard	710/45-26.5 600/55-26.5
Optional	800/40-26.5

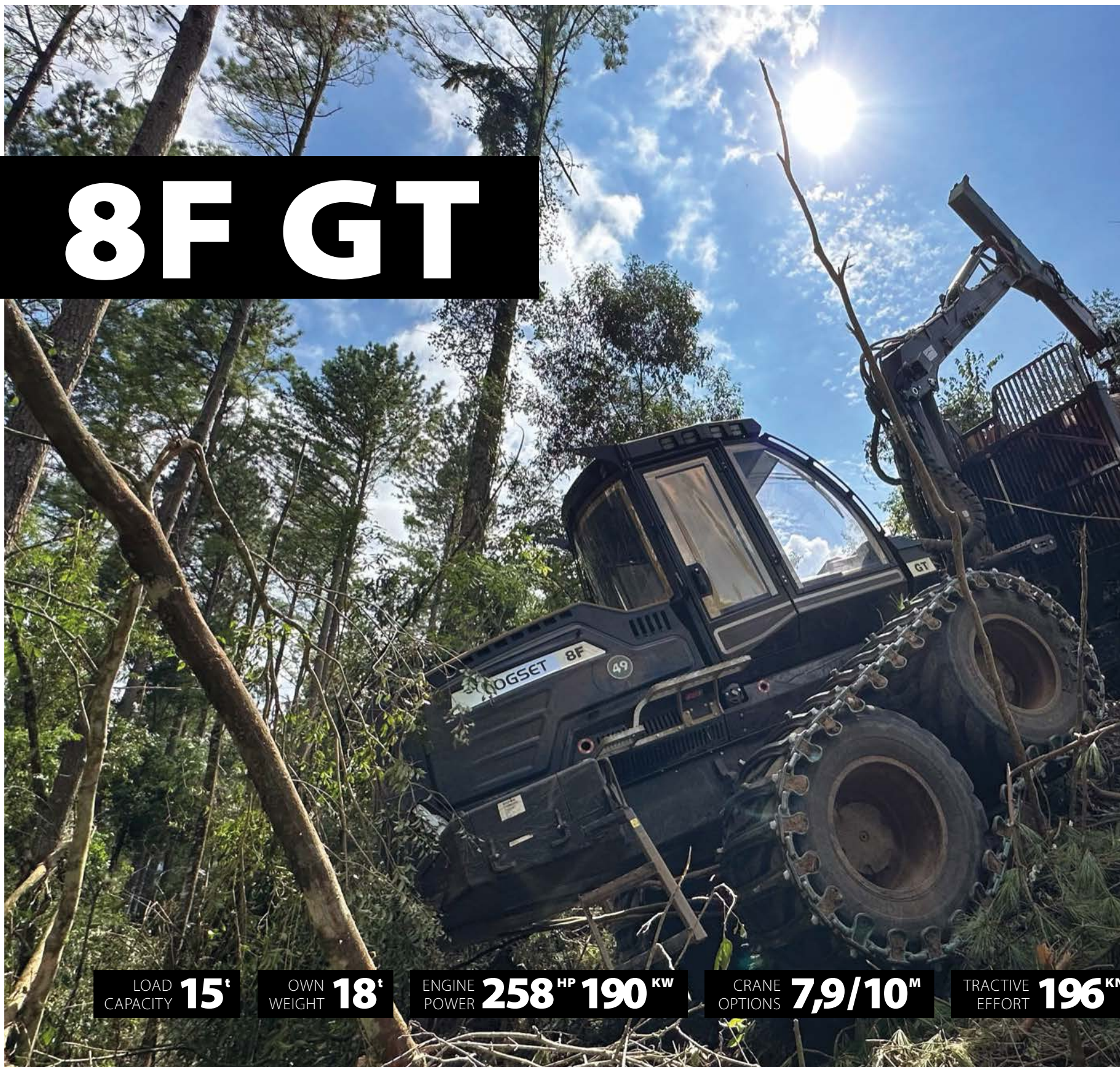
### CRANE

Mesera crane options	Mesera 92 F
Reach options	7,9/10 m (25.9/32.8 ft)
Lifting capacity	130 kNm (95 800 ft-lb)
Rotator	360°

### OPTIONAL EQUIPMENTS

Contact your local dealer for more information.

# 8F GT



LOAD  
CAPACITY **15<sup>t</sup>**

OWN  
WEIGHT **18<sup>t</sup>**

ENGINE  
POWER **258<sup>HP</sup> 190<sup>KW</sup>**

CRANE  
OPTIONS **7,9/10<sup>M</sup>**

TRACTIVE  
EFFORT **196<sup>KN</sup>**



### **STRONG-FRAMED FORWARDER DESIGNED FOR CLEARFELLINGS**

The Logset 8F GT is a cost-efficient machine for forwarding. It has a loading capacity of 15 tons and its load bay length allows a double stack of 3-meter logs. The capacity is impressive even in the worst conditions. Tough challenges such as soft ground, steep terrain, or long haul are tackled with a powerful engine and a strong transmission.

Reliability and low fuel consumption are key factors of 8F, like all other Logset models.

/10<sup>M</sup>

TRACTIVE  
EFFORT

**196<sup>KN</sup>**

## LOGSET 8F GT

### **DIMENSIONS**

Own weight, from	18 000 kg (39 700 lbs)
Load capacity	15 000 kg (33 100 lbs)
Load area	4,85 - 5,85 m <sup>2</sup>
Load area length	4,25 m (167", 13.9 ft) 5,6 m (220", 18.4 ft)

### **ENGINE**

Type	AGCO Power 74 LFTN
Stage	EPA Tier 4 final, EU Stage V
Power at 1850 rpm	190 kW (258 hp)
Torque at 1500 rpm	1130 Nm (830 ft lb)
Fuel tank	188 l (49 US gal)
DEF	30 l (8 US gal)

### **TRANSMISSION**

Type	Hydrostatic mechanical
Tractive effort	196 kN (44 000 lbf)
Gear box	2 gears

### **HYDRAULIC SYSTEM**

Pump size	140 cm <sup>3</sup> (180 cm <sup>3</sup> optional)
Pressure	24 Mpa
Hydraulic oil tank	175 l (46 US gal)

### **CABIN**

Control system	TOC 2
Battery voltage	24 V
Options	Smooth Ride, Smooth HIFI
Safety tested and approved	

### **TYRES**

Standard	710/45-26.5 600/55-26.5
Optional	800/40-26.5

### **CRANE**

Mesera crane options	Mesera 92 F
Reach options	7,9/10 m (25.9/32.8 ft)
Lifting capacity	130 kNm (95 800 ft-lb)
Rotator	360°

### **OPTIONAL EQUIPMENTS**

Contact your local dealer for more information.

# 10F GT



LOAD  
CAPACITY **18<sup>t</sup>**

OWN  
WEIGHT **22<sup>t</sup>**

ENGINE  
POWER **291<sup>HP</sup> 214<sup>KW</sup>**

CRANE  
OPTIONS **8,1/10<sup>M</sup>**

TRACTIVE  
EFFORT **22<sup>t</sup>**



## POWERFUL 18-TON FORWARDER FOR LONG HAULS

This impressive 18-ton forwarder has an exceptionally robust and reliable structure. It has been designed for the toughest climates and terrains, where logs and loads are heavy and the terrain is the most challenging. Robustness is essential also to minimize service needs when hauling distances are long and machines are far away from roads.

## LOGSET 10F GT

### DIMENSIONS

Own weight, from	22 000 kg (48 500 lbs)
Load capacity	18 000 kg (39 700 lbs)
Load area	5,4 - 6 m <sup>2</sup>
Load area length	4,8 m (189", 15.8 ft) 6,2 m (244", 20.3 ft)

### ENGINE

Type	AGCO Power 74 LFTN
Stage	EPA Tier 4 final, EU Stage V
Power at 1850 rpm	214 kW (291 hp)
Torque at 1500 rpm	1280 Nm (940 ft lb)
Fuel tank	248 l (65 US gal)
DEF	30 l (8 US gal)

### TRANSMISSION

Type	Hydrostatic mechanical
Tractive effort	224 kN (50 300 lbf)
Gear box	2 gears

### HYDRAULIC SYSTEM

Pump size	180 cm <sup>3</sup>
Pressure	24 Mpa
Hydraulic oil tank	175 l (46 US gal)

### CABIN

Control system	TOC 2
Battery voltage	24 V
Options	Smooth Ride, Smooth HIFI
Safety tested and approved	

### TYRES

Standard	750/55-26.5
----------	-------------

### CRANE

Mesera crane options	Mesera 122 F (Mesera 142 F option)
Reach options	8,1/10 m (26.6/32.8 ft)
Lifting capacity	155 kNm (114 300 ft-lb)
Rotator	360°

### OPTIONAL EQUIPMENTS

Contact your local dealer for more information.

1/10<sup>M</sup>

TRACTIVE  
EFFORT **224<sup>KN</sup>**

# 12F GT



LOAD CAPACITY **20<sup>t</sup>**

OWN WEIGHT **24<sup>t</sup>**

ENGINE POWER **291<sup>HP</sup> 214<sup>KW</sup>**

CRANE OPTIONS **8,1/10<sup>M</sup>**

TRACTIVE EFFORT **2**

**20-TO**  
The Lo  
machin  
power  
the Lo  
embra  
low run  
compr

**DECEL  
PROTI**  
The De  
forward  
exampl  
improv  
engine  
engine

## 20-TON FORWARDER FOR TOUGH CONDITIONS

The Logset 12F GT is the biggest forwarder in the Logset range. This machine carries the highest possible timber volume. Thanks to the powerful 291 hp engine and the amplified tractive force of 262 kN, the Logset 12F GT is also the most efficient forwarder. This forwarder embraces all the things Logset values in the machine range: reliability, low running costs, and enough power to enhance productivity without compromise.

## DECELERATE ASSISTANT AND PROTECTION SYSTEM (DEX)

The DeX is an intelligent engine brake assistant that controls the forwarder in situations requiring higher engine braking moments, for example when driving downhill in steep conditions. The DeX not only improves the safety and comfort of the driver but also protects the engine from overspeed moments. This increases the lifetime of the engine and transmission components.

## LOGSET 12F GT

### DIMENSIONS

Own weight, from	24 000 kg (52 900 lbs)
Load capacity	20 000 kg (44 100 lbs)
Load area	5,4 - 6,6 m <sup>2</sup>
Load area length	4,8 m (189", 15.8 ft) 6,2 m (244", 20.3 ft)

### ENGINE

Type	AGCO Power 74 LFTN
Stage	EPA Tier 4 final, EU Stage V
Power at 1850 rpm	214 kW (291 hp)
Torque at 1500 rpm	1280 Nm (940 ft lb)
Fuel tank	248 l (65 US gal)
DEF	30 l (8 US gal)

### TRANSMISSION

Type	Hydrostatic mechanical
Tractive effort	262 kN (58 900 lbf)
Gear box	2 gears

### HYDRAULIC SYSTEM

Pump size	180 cm <sup>3</sup>
Pressure	24 Mpa
Hydraulic oil tank	175 l (46 US gal)

### CABIN

Control system	TOC 2
Battery voltage	24 V
Options	Smooth Ride, Smooth HIFI
Safety tested and approved	

### TYRES

Standard	780/50-28.5
Optional	710/55-28.5

### CRANE

Mesera crane options	Mesera 142 F
Reach options	8,1/10 m (26.6/32.8 ft)
Lifting capacity	178 kNm (131 200 ft-lb)
Rotator	360°

### OPTIONAL EQUIPMENTS

Contact your local dealer for more information.

10<sup>M</sup>

TRACTIVE EFFORT **262** KN

# FORWARDER OPTIONS



## **OPTIONS**

Every area has  
work possibilities  
options that

## **SMOOTH**

technology  
strain on the  
crane position  
damping its  
the equipment

## **CRANE C**

Mesera offers  
cranes suitable  
crane will provide  
operator.

## **SMOOTH**

cab. This feature  
and a feel-good  
has the easiest  
option will be  
operator.

## **BULLDO**

forwarders.  
to tilt, lift and



### **OPTIONS MAKE THE LOGSET CUSTOMIZED TO YOUR WORKING SITE.**

Every area has its specific needs. With the right options, we can push productivity, make the day lighter, or make impossible work possible. For example, load bays are usually modified to fit different forest and log types and sizes. There are hundreds of options that differ in each country. Here are only a few examples, consult your local dealer for more specific details.

**SMOOTH CRANE** is a new feature launched in 2022. The technology will guarantee better productivity by reducing the strain on the operator. The TOC 2 control system knows the crane position spatially and prevents the maximum outreach by damping its movements. Smoother moves with less effort save the equipment and the operator.

**CRANE OUTREACH** various length options are available. Mesera offers the best combination of robust and powerful cranes suitable for all types of logs and trees. The forwarders' crane will provide precise movements and comfort for the operator.

**SMOOTH RIDE** is a comfortable suspension system for the cab. This feature will smooth your working day with less fatigue and a feel-good mind in this very spacious cab. The Smooth Ride has the easiest maintenance on the market, so choosing this option will be a win-win for the productivity and comfort of the operator.

**BULLDOZER BLADE** available equipment for all forwarders. This strong and versatile piece of equipment is easy to tilt, lift and will help with a variety of tasks.

**TRANSMISSION** controlled and optimized by the Logset control system, TOC 2. The combination of reliable NAF-bogies ensures perfect stability of the forwarder. The forwarders are available with balancing bogies for optimum traction and load distribution in all operating conditions.

**TYRES** are available with or without tracks for every forwarder model. Several different tread patterns for optimal grip, traction, or soil-saving purposes.

**PROTECTIONS** Additional protections such as guards are offered to protect the bonnet, cab, and crane. The features will guarantee a longer lifespan of the equipment.

**SMOOTH HIFI** audio truly makes the party on! Premium quality speakers, a subwoofer, and a DSP amplifier are professionally fine-tuned and installed into the Logset cab. Together they make a sound experience that you will not forget. Enough power to have your trouser legs jamming.

# HARVESTERS



## HOT POINTS: WHAT MAKES A LOGSET?

**ENGINE** Strong and trustworthy ACGO Power diesel engines made in Linnanvuori, Finland. In our Logset philosophy, it is to have lots of power capacity, which we use wisely. SCR engine technology makes our engines run cleaner with reduced emissions. OA ACGO engine together with the TOC 2 control, gives one of the lowest fuel consumption in the market.

**CRANE** Designed for power, durability, and good working outreach area, Mesera cranes give great performance in all conditions. The working area

is wide, and due to the narrow pillar construction, it gives important extra inches of visibility and more possibilities for the user's felling pattern in steep conditions. A precise, with fast controls and an 11-meter maximum outreach, make the operator's day. Different crane models are optimized to work precisely and fast with typical timber sizes.

**HARVESTER HEAD** Logset TH harvester heads are available in all sizes, in total there are 7 models. Strong construction, precise control and measuring,

good processing speed, and ease of use are key benefits of Logset's harvester heads. Available with dozens of different link models and options for many purposes.

**CONTROLS** Logset mini joysticks and adjustable controls have given lots of good customer feedback. All buttons and commands can be determined in TOC-2. Good ergonomics, robust adjustable seat, and armrests are essential for a good feeling day.

**HYDRAULICS** Logset machines are well known for hydraulic simplicity. Everything is designed to minimize power consumption and keep the power output and durability at its maximum level. Depending on the machine model, they have 1 or 2 hydraulic pumps. Flow is always optimal for machine size, also the hydraulic tanks are designed to ensure the long lifespan of pumps and other components. The hydraulics are also designed for easy maintenance.

**CABIN** Logset to introduce a cab in harvester cab its low window visibility on the tidy cab design working ergonomics cab to be a thorough cab leveling working lights have to be less stress



machines are  
simplicity.  
to minimize  
keep the  
ability at its  
ing on the  
ve 1 or 2 hyd-  
ways optimal  
e hydraulic  
sure the long  
ther compo-  
also designed



**WE HAVE LEFT OUR OWN FOOTPRINT** on forest harvester development for good. Since the Logset Titan series, arch-type cabs have become a standard for the industry. Logset cab, ergonomics, and machine power are some key elements that Logset harvester's range is well known for.

AGILE AND POWERFUL  
**6HP GT**



LIGHTWEIGHT AND STABLE  
**6HP GTE**



SMALL AND HANDY  
**5HP GT**



POWERFUL 6-WHEELER  
**8H GT**



STRONG AND STABLE  
**8H GTE**



GREEN AND POWERFUL  
**8H GTE HYBRID**



THE STRONGEST  
**12H GTE HYBRID**



**A POWERFUL ACGO POWER ENGINE** is the heart of a Logset harvester. Power makes productivity, safety, and usability in all conditions. It does not always need to mean more consumption or emissions, with good design we manage to keep them low. Good balance, a strong Mesera crane together with robust and precise Logset TH-series harvester head completes the

harvester. TOC 2 control system optimizes the workload for convenient and precise control of the machine. The Logset's harvester range is wide with seven different models available. Each type of forest and terrain has its own specific needs, and we are here to serve them all.

**CABIN** Logset was the first company to introduce a curved front windscreen in harvester cabins. Together with its low window line, it gives the best visibility on the market. A simple and tidy cab design combined with good working ergonomics makes the Logset cab to be a throne in the forest. Automatic cab leveling, low noise, and good working lights help the long workdays to be less stressful.

**HYBRID TECHNOLOGY** is a powerful addition to the diesel engine model. With a hybrid power unit, you get an enormous amount of increased power without a massive combustion engine and its challenges. A hybrid power line works two ways: It stores energy when the harvester does not require extra power and gives it back when the harvester needs extra power.

Usually, most of the log processing is done with the help of an electric motor. Additional and instant power makes the work easier even in demanding conditions.

**BOGIES** All Logset machines are equipped with NAF bogies and gear boxes.

**TOC 2, TOTAL OPERATION CONTROL** is an advanced control system, it runs all Logset machines. Precise measuring, easy control, and the ability to customize your control layout give you a flexible way to drive the machine the way you want. All machine functions are controlled by TOC 2, good things such as durability, productivity, and fuel consumption are coded into TOC 2.

# 5HP GT

## COMPACT SIX-WHEELER DESIGNED FOR THINNINGS

The Logset 5HP GT is the smallest harvester in the Logset range. The small size of the harvester combined with the powerful AGCO 7.4 liter 6-cylinder engine makes the harvester versatile. The harvester is easy to maneuver and it turns effortlessly. The 34-inch wheels at the back allow the machine to operate in various types of terrains.

The width of the machine can be narrowed down to 2,5 meters with 600 mm tires. Together with 8,3-11 meter reach options and TH45, TH55, or TH65 head this small and powerful machine truly fills its position in the small machine class. Low fuel consumption is a good economy and also good for the environment.



OWN WEIGHT **15<sup>t</sup>**

ENGINE POWER **230<sup>HP</sup> 169<sup>KW</sup>**

TRACTIVE EFFORT **135<sup>KN</sup>**

CF  
OPT



## LOGSET 5HP GT

### DIMENSIONS

Own weight, from 15 000 kg (33 100 lbs)

### ENGINE

Type AGCO Power 74 LFTN  
 Stage EPA Tier 4 final, EU Stage V  
 Power at 1850 rpm 169 kW (230 hp)  
 Torque at 1500 rpm 1000 Nm (740 ft lb)  
 Fuel tank, net 600 l (159 US gal)  
 DEF 40 l (10 US gal)

### TRANSMISSION

Type Hydrostatic mechanical  
 Tractive effort 135 kN (30 300 lbf)  
 Gear box 2 gears

### HYDRAULIC SYSTEM

Flow 1000 rpm 190 l/min (50 US gal/min)  
 Hydraulic oil tank, net 195 l (52 US gal)

### CABIN

Control system TOC 2  
 Measuring device TOC-MD 2  
 Battery voltage 24 V  
 Option Smooth HIFI  
 Safety tested and approved

### TYRES

Front 710/40-22.5 (600/50-22.5 optional)  
 Rear 710/55-34 (600/65-34 optional)

### CRANE

Mesera crane options Mesera 221 H  
 Reach options 8,3/10/11 m (27.2/32.8/36.1 ft)  
 Lifting capacity 188 kNm (138 600 ft-lb)

### HARVESTER HEADS

Model options TH45, TH55, TH65

### OPTIONAL EQUIPMENTS

Contact your local dealer for more information

**35<sup>KN</sup>**

CRANE  
 OPTIONS **8,3/10/11<sup>M</sup>**

# 6HP GT



OWN WEIGHT **18<sup>t</sup>**

ENGINE POWER **230<sup>HP</sup> 169<sup>KW</sup>**

TRACTIVE EFFORT **171<sup>KN</sup>**

VERSA

The Log  
for both  
is very p  
great m

CR  
OPTI

## VERSATILE SIX-WHEELED HARVESTER

The Logset 6HP GT is a versatile and agile 6-wheel harvester. It is suitable for both thinning operations and medium-sized clear-fells. The harvester is very productive with low fuel consumption. Good traction power, great maneuverability in tight corners, and good reach with a maximum

11-meter crane give lots of abilities to work in varying conditions. 6HP GT can be equipped

with TH45, TH55 or TH65 head for

easy and precise operation.



## LOGSET 6HP GT

### DIMENSIONS

Own weight, from 18 000 kg (39 700 lbs)

### ENGINE

Type AGCO Power 74 LFTN  
Stage EPA Tier 4 final, EU Stage V  
Power at 1850 rpm 169 kW (230 hp)  
Torque at 1500 rpm 1000 Nm (740 ft lb)  
Fuel tank, net 600 l (159 US gal)  
DEF 40 l (10 US gal)

### TRANSMISSION

Type Hydrostatic mechanical  
Tractive effort 171 kN (38 400 lbf)  
Gear box 2 gears

### HYDRAULIC SYSTEM

Flow 1000 rpm 190 l/min (50 US gal/min)  
Hydraulic oil tank, net 195 l (52 US gal)

### CABIN

Control system TOC 2  
Measuring device TOC-MD 2  
Battery voltage 24 V  
Option Smooth HIFI  
Safety tested and approved

### TYRES

Front 710/45-26.5 (600/55-26.5 optional)  
Rear 710/55-34 (600/65-34 optional)

### CRANE

Mesera crane options Mesera 221 H  
Reach options 8,3/10/11 m (27.2/32.8/36.1 ft)  
Lifting capacity 188 kNm (138 600 ft-lb)

### HARVESTER HEADS

Model options TH45, TH55, TH65

### OPTIONAL EQUIPMENTS

Contact your local dealer for more information

71<sup>KN</sup>

CRANE  
OPTIONS **8,3/10/11<sup>M</sup>**

# 8H GT



OWN WEIGHT **19<sup>t</sup>**

ENGINE POWER **291<sup>HP</sup> 214<sup>KW</sup>**

TRACTIVE EFFORT **171<sup>KN</sup>**

CR  
OPTI



## AGILE SIX-WHEELED HARVESTER

The Logset 8H GT is an agile and powerful harvester that turns very easily. A bit shorter and lighter body than eight-wheeled models. The Logset 8H GT is suitable for thinning operations, but it performs even better on medium and large-sized clear-fells. This harvester model enjoys a solid reputation for unbeatable productivity and fuel economy. The powerful 7.4-liter AGCO Power engine develops 214 kW (291 hp), and in combination with the Mesera 241 H crane, this is the perfect machine for challenging felling operations.

## LOGSET 8H GT

### DIMENSIONS

Own weight, from 19 000 kg (41 800 lbs)

### ENGINE

Type AGCO Power 74 LFTN  
 Stage EPA Tier 4 final, EU Stage V  
 Power at 1850 rpm 214 kW (291 hp)  
 Torque at 1500 rpm 1280 Nm (940 ft lb)  
 Fuel tank, net 600 l (159 US gal)  
 DEF 40 l (10 US gal)

### TRANSMISSION

Type Hydrostatic mechanical  
 Tractive effort 171 kN (38 400 lbf)  
 Gear box 2 gears

### HYDRAULIC SYSTEM

Flow 1000 rpm 210 l/min (55 US gal, standard)  
 190 + 140 l/min (50 + 37 US gal, optional)  
 Hydraulic oil tank, net 195 l (52 US gal)

### CABIN

Control system TOC 2  
 Measuring device TOC-MD 2  
 Battery voltage 24 V  
 Option Smooth HIFI  
 Safety tested and approved

### TYRES

Front 710/45-26.5 (600/55-26.5 optional)  
 Rear 710/55-34 (600/65-34 optional)

### CRANE

Mesera crane options Mesera 241 H (Mesera 221 H optional)  
 Reach options 10,3/11,1 m (33.8/36.4 ft)  
 Lifting capacity 240 kNm (177 000 ft-lb)

### HARVESTER HEADS

Model options TH55, TH65, TH75

### OPTIONAL EQUIPMENTS

Contact your local dealer for more information

**71<sup>KN</sup>**

CRANE  
 OPTIONS

**10,3/11,1<sup>M</sup>**

# 6HP GTE

## MEDIUM-SIZED HARVESTER WITH GOOD FUEL ECONOMY

The Logset 6HP GTE is a medium-sized harvester that can be described as stable and fuel-saving. It is a fast, agile, and strong machine designed for smaller thinning operations and medium-sized clear-fells. In such conditions, it has the optimal productivity and the best economy. A stable eight-wheeler performs well in steep slopes and soft conditions. Up to 11-meter reach with 221 H Mesera crane with perfectly dimensioned engine, hydraulics, and mechanical parts makes the 6HP GTE an optimal harvester in its size class.



OWN WEIGHT **21<sup>t</sup>**

ENGINE POWER **258<sup>HP</sup> 190<sup>KW</sup>**

TRACTIVE EFFORT **171<sup>KN</sup>**

CR  
OPTI



## LOGSET 6HP GTE

### DIMENSIONS

Own weight, from 21 000 kg (46 300 lbs)

### ENGINE

Type AGCO Power 74 LFTN  
 Stage EPA Tier 4 final, EU Stage V  
 Power at 1850 rpm 190 kW (258 hp)  
 Torque at 1500 rpm 1130 Nm (830 ft lb)  
 Fuel tank, net 495 l (131 US gal)  
 DEF 40 l (10 US gal)

### TRANSMISSION

Type Hydrostatic mechanical  
 Tractive effort 171 kN (38 400 lbf)  
 Gear box 2 gears

### HYDRAULIC SYSTEM

Flow 1000 rpm 190 l/min (50 US gal/min)  
 Hydraulic oil tank, net 305 l (81 US gal)

### CABIN

Control system TOC 2  
 Measuring device TOC-MD 2  
 Battery voltage 24 V  
 Option Smooth HIFI  
 Safety tested and approved

### TYRES

Front 710/45-26.5 (600/55-26.5,  
 800/40-26.5 optional)  
 Rear 710/45-26.5 (600/55-26.5,  
 800/40-26.5 optional)

### CRANE

Mesera crane options Mesera 221 H  
 Reach options 8,3/10/11,1 m  
 (27.2/32.8/36.1 ft)  
 Lifting capacity 188 kNm (138 600 ft-lb)

### HARVESTER HEADS

Model options TH55, TH65

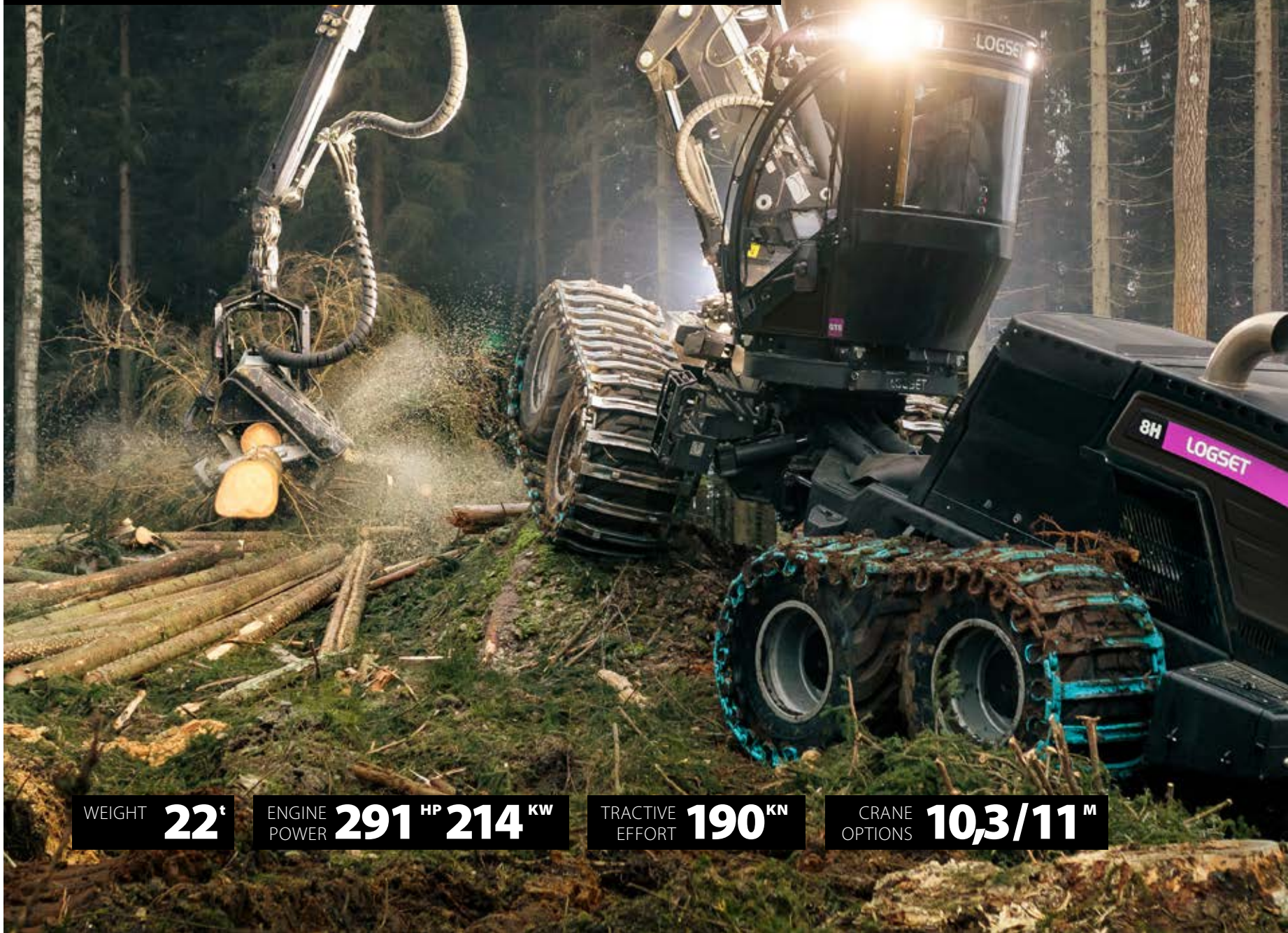
### OPTIONAL EQUIPMENTS

Contact your local dealer for more information

**71<sup>KN</sup>**

CRANE  
 OPTIONS **8,3/10/11<sup>M</sup>**

# 8H GTE



WEIGHT **22<sup>t</sup>**

ENGINE POWER **291 HP 214 KW**

TRACTIVE EFFORT **190<sup>KN</sup>**

CRANE OPTIONS **10,3/11<sup>M</sup>**

## A STEADY AND STRONG HARVESTER FOR VARYING TERRAIN

The Logset 8H GTE harvester performs with ease in forests with small to large size trees and varying terrain. The size of the engine, the hydraulics, and the mechanical parts of the machine are perfectly dimensioned – making the Logset design optimal compared to other harvesters in its size class. The Logset 8H GTE has a Mesera 241 H crane (or a Mesera 221 H as an option), with an outreach of up to 11,1 meters.

The harvester can be equipped with the Logset TH55, TH65, or TH75 harvester head, all designed for easy and precise operation. The harvester head can be operated fast, yet precise.

## LOGSET 8H GTE

### DIMENSIONS

Own weight, from 22 000 kg (48 500 lbs)

### ENGINE

Type AGCO Power 74 LFTN  
Stage EPA Tier 4 final, EU Stage V  
Power at 1850 rpm 214 kW (291 hp)  
Torque at 1500 rpm 1280 Nm (940 ft lb)  
Fuel tank, net 495 l (131 US gal)  
DEF 40 l (10 US gal)

### TRANSMISSION

Type Hydrostatic mechanical  
Tractive effort 190 kN (42 700 lbf)  
Gear box 2 gears

### HYDRAULIC SYSTEM

Flow 1000 rpm 210 l/min (55 US gal, standard)  
190 + 140 l/min (50 + 37 US gal, optional)  
Hydraulic oil tank, net 305 l (81 US gal)

### CABIN

Control system TOC 2  
Measuring device TOC-MD 2  
Battery voltage 24 V  
Option Smooth HIFI  
Safety tested and approved

### TYRES

Front 710/45-26.5 (600/55-26.5,  
800/40-26.5 optional)  
Rear 710/45-26.5 (600/55-26.5,  
800/40-26.5 optional)

### CRANE

Mesera crane options Mesera 241 H (Mesera 221 H optional)  
Reach options 10,3/11,1 m (33.8/36.4 ft)  
Lifting capacity 240 kNm (177 000 ft-lb)

### HARVESTER HEADS

Model options TH55, TH65, TH75

### OPTIONAL EQUIPMENTS

Contact your local dealer for more information

10,3/11<sup>M</sup>

# 8H GTE HYBRID



OWN WEIGHT **23<sup>t</sup>**

ENGINE POWER **423<sup>HP</sup> 311<sup>KW</sup>**

TRACTIVE EFFORT **195<sup>KN</sup>**

CR  
OPTI

## 8H GTE HYBRID

The Logset 8H GTE Hybrid is a powerful medium-sized harvester that doesn't slow down under pressure. The machine's diesel engine runs at a constant pace, while the hybrid system provides up to 97 kW (132 hp) of additional power required in a typical felling and processing cycle. This allows the hybrid harvester to easily perform several tasks at the same time while keeping the engine load constant.

### HYBRID POWER!

Hybrid system offers a 45 % increase in power and 39 % in torque. The hybrid system allows us to increase the power of the entire machine without increasing the size of the diesel engine.

## HYBRID

READ MORE ABOUT  
LOGSET HYBRID  
TECHNOLOGY  
ON PAGE 39.



CRANE  
OPTIONS **10,3/11,1<sup>M</sup>**

## LOGSET 8H GTE HYBRID

### DIMENSIONS

Own weight, from 23 000 kg (50 700 lbs)

### HYBRID SYSTEM, ENGINE + ELECTRIC MOTOR

Max. power at 1850 rpm 311 kW (423 hp)

Max. torque at 1500 rpm 1780 Nm (1313 ft lb)

### ENGINE

Type AGCO Power 74 LFTN

Stage EPA Tier 4 final, EU Stage V

Power at 1850 rpm 214 kW (291 hp)

Torque at 1500 rpm 1280 Nm (944 ft lb)

Fuel tank, net 390 l (103 US gal)

DEF 40 l (11 US gal)

### TRANSMISSION

Type Hydrostatic mechanical

Tractive effort 195 kN (43 800 lbf)

Gear box 2 gears

### HYDRAULIC SYSTEM

Flow 1000 rpm 210+180 l/min (55+47 US gal)

Hydraulic oil tank, net 195 l (52 US gal)

### CABIN

Control system TOC 2

Measuring device TOC-MD 2

Battery voltage 24 V

Option Smooth HIFI

Safety tested and approved

### TYRES

Front 710/45-26.5 (600/55-26.5,  
800/40-26.5 optional)

Rear 710/45-26.5 (600/55-26.5,  
800/40-26.5 optional)

### CRANE

Mesera crane options Mesera 241 H (Mesera 221 H  
optional)

Reach options 10,3/11,1 m (33.8/36.4 ft)

Lifting capacity 240 kNm (177 000 ft lb)

### HARVESTER HEADS

Model options TH55, TH65, TH75

### OPTIONAL EQUIPMENTS

Contact your local dealer for more information

**95<sup>KN</sup>**

# 12H GTE HYBRID

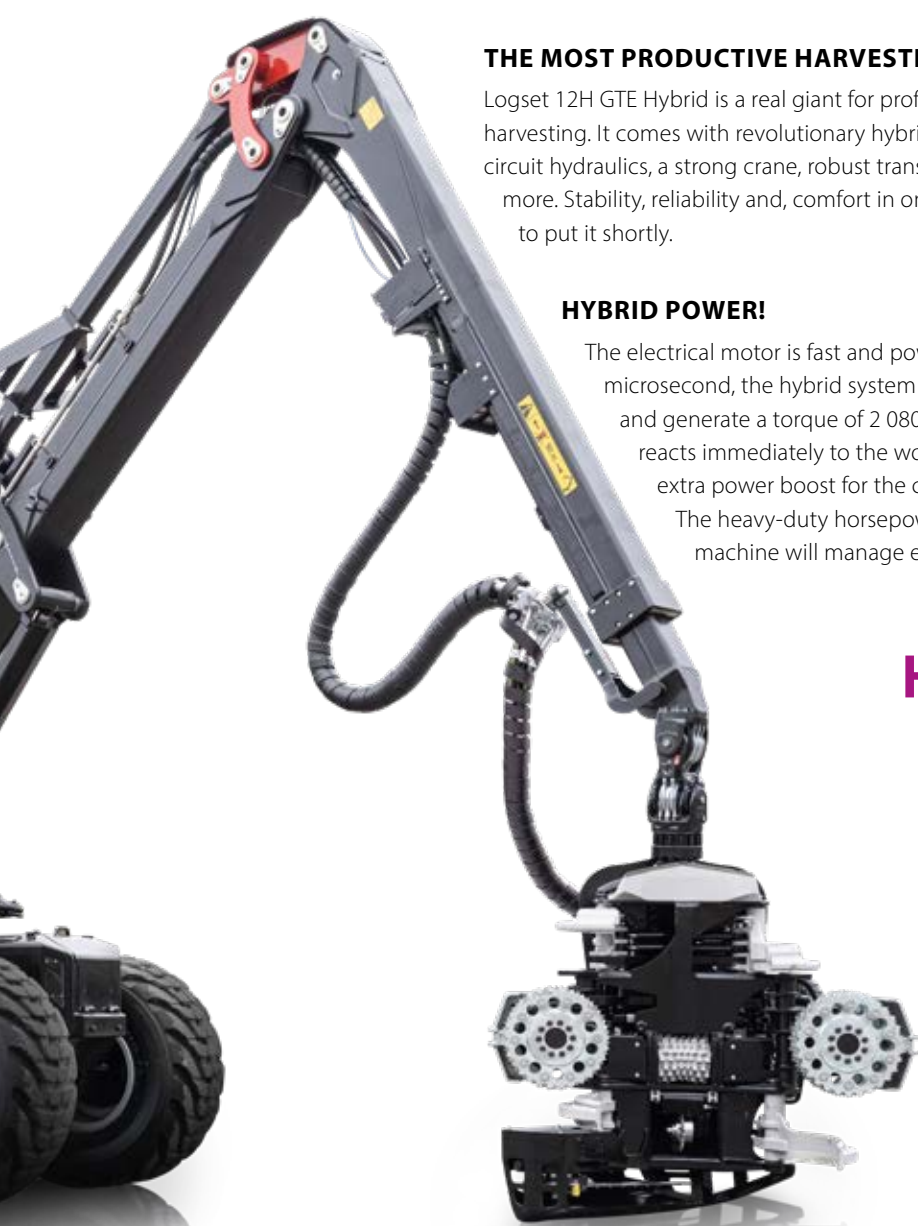


OWN WEIGHT **24,5<sup>t</sup>**

ENGINE POWER **502<sup>HP</sup> 369<sup>KW</sup>**

TRACTIVE EFFORT **220<sup>KN</sup>**

CF  
OPT



## THE MOST PRODUCTIVE HARVESTER IN THE WORLD

Logset 12H GTE Hybrid is a real giant for profitable large-scale harvesting. It comes with revolutionary hybrid technology, double-circuit hydraulics, a strong crane, robust transmission, and much more. Stability, reliability and, comfort in one big package, to put it shortly.

### HYBRID POWER!

The electrical motor is fast and powerful. Within a microsecond, the hybrid system can deliver up to 502 hp and generate a torque of 2 080 Nm. The hybrid system reacts immediately to the workload, providing an extra power boost for the crane.

The heavy-duty horsepower guarantees the machine will manage even the hardest tasks.

## HYBRID

READ MORE ABOUT  
LOGSET HYBRID  
TECHNOLOGY  
ON PAGE 39.

## LOGSET 12H GTE HYBRID

### DIMENSIONS

Own weight, from 24 500 kg (54 000 lbs)

### HYBRID SYSTEM, ENGINE + ELECTRIC MOTOR

Max. power at 1850 rpm 369 kW (502 hp)

Max. torque at 1500 rpm 2080 Nm (1534 ft lb)

### ENGINE

Type AGCO Power 74 LFTN

Stage EPA Tier 4 final, EU Stage V

Power at 1850 rpm 214 kW (291 hp)

Torque at 1500 rpm 1280 Nm (944 ft lb)

Fuel tank, net 480 l (127 US gal)

DEF 40 l (11 US gal)

### TRANSMISSION

Type Hydrostatic mechanical

Tractive effort 220 kN (49 400 lbf)

Gear box 2 gears

### HYDRAULIC SYSTEM

Flow 1000 rpm 210+210 l/min (55+55 US gal)

Hydraulic oil tank, net 305 l (81 US gal)

### CABIN

Control system TOC 2

Measuring device TOC-MD 2

Battery voltage 24 V

Option Smooth HIFI

Safety tested and approved

### TYRES

Front 780/50-28.5 (710/55-28.5 optional)

Rear 780/50-28.5 (710/55-28.5 optional)

### CRANE

Mesera crane options Mesera 285 H (Mesera 280 H optional)

Reach options 9,7 m (31.8 ft)

Lifting capacity 280 kNm (206 500 ft lb)

### HARVESTER HEADS

Model options TH75, TH85

### OPTIONAL EQUIPMENTS

Contact your local dealer for more information

220<sup>KN</sup>

CRANE  
OPTIONS **9,7<sup>M</sup>**

# HARVESTER OPTIONS



## **OPTIONS**

Every area has its own challenges and work possibilities. Our harvester options address the challenges and maximize the work possibilities.

## **SMOOTH CR**

Our smooth control technology works in all terrain conditions, reducing strain on the operator and the machine. It also improves position spatial accuracy and reduces the movement of the harvester equipment and the logs.

## **CRANE REAR**

Mesera offers a range of crane options for the harvester. Our cranes are suitable for all types of work. They are designed for safety and comfort for the operator.

## **TRANSMISS**

Our harvester control system is designed to ensure the harvester works smoothly and efficiently. It is available with a range of transmission options to suit different work conditions.

## **TYRES**

Our harvester is available with a range of tyre options. These include standard tyres and specialised tyres for different terrain conditions.

## **HARVESTER**

Our harvester is designed to meet your needs. It is available in a range of configurations to suit different work conditions.

## **PROTECTIO**

Our harvester is designed to protect the operator and the machine. It is available with a range of protection options to suit different work conditions.



## **OPTIONS MAKE THE LOGSET CUSTOMIZED TO YOUR WORKING SITE.**

Every area has its specific needs. With the right options, we can push productivity, make the day lighter, or make impossible work possible. Power and traction needs are higher when working on rough and steep hills. Warm area machines meet different challenges than machines in sub-zero operations. Here are only a few examples, consult your local dealer for more specific details.

**SMOOTH CRANE** is a new feature launched in 2022. The technology will guarantee better productivity by lowering the strain on the operator. TOC 2 control system knows the crane position spatially and prevents the maximum reach by damping the movements. Smoother moves with less effort save the equipment and the operator

**CRANE REACH** with various length options is available. Mesera offers the best combination of robust and powerful cranes suitable for all types of logs and trees. The harvesters' cranes will provide precision movements for the heads and comfort to the operator.

**TRANSMISSION** controlled and optimized by the Logset control system, TOC 2. The combination of reliable NAF-bogies ensures the perfect stability of the harvesters. The harvesters are available with balancing bogies for optimum traction and load distribution in all conditions.

**TYRES** with or without tracks are available for every forwarder model. Several different tyre patterns for optimal grip, traction or soil-saving purposes.

**HARVESTER HEADS** a full range of heads available to fit best your needs. The Logset heads are developed in-house and will offer you a seamless experience with your Logset harvester.

**PROTECTIONS** Additional protections such as guards are offered to protect the bonnet, cabin, and crane... The features will guarantee a longer lifespan of the equipment.

**LOGSET TOC-MD 2** the Total Operation and Control Measuring Device 2 is the own Logset device developed for the harvester head. The system maximizes production and is easy to navigate and user-friendly. The TOC-MD 2 is thoroughly proven through the years. Features like adaptive feed optimization make the operator's life easier and the machine more productive.

**HYBRID** POWERFUL AND SUSTAINABLE  
SOLUTION FOR MODERN HARVESTING

### **THE ONLY ELECTRICAL HYBRID HARVESTER ON THE MARKETS**

Hybrid system offers a 45 % increase in power and 39 % in torque. The hybrid system allows us to increase the power of the entire machine without increasing the size of the diesel engine. Hybrid technology is available on Logset 8H GTE and 12H GTE models.

**ECONOMICAL** All the peak loads on the harvester's working cycle are compensated by the electric motor. The electric motor gives a power boost to the harvester when the workload requires it. When the diesel engine runs at a constant pace the harvester is saving fuel. The fuel saving can be up to 25 %, which means lower running costs compared to traditional technology. The hybrid harvester maintains a regular working pace even with large trees, which increases its productivity.

# TH45

**LIGHTWEIGHT AND NARROW, DESIGNED FOR THINNING OPERATIONS.**

The Logset TH45 is built for thinning operations, processing small to medium-sized trees. It is compact and lightweight, enabling smooth and quick operation even in dense forests. It is equipped with two hydraulic feeding wheels and a support wheel to reduce friction and improve feeding. The hydraulics has been optimized to work with smaller harvesters. A flow divider divides pressure and flow equally to each feeding motor, ensuring smooth feeding and delimiting even in rough conditions. The hose routing is well organized and well protected. The measuring wheel is controlled with a hydraulic cylinder, which is adjustable for ideal pressure in all conditions.

WEIGHT **850<sup>KG</sup>**

BASE MACHINE **14-20<sup>T</sup>**

FEED SPEED **6-1/4,7<sup>M/S</sup>**

## LOGSET TH45

### DIMENSIONS

Width, head open	1250 mm (49.2")
Width, head closed	1100 mm (43.3")
Height to top knife	1150 mm (45.3")
Height with rotator and link	1700 mm (66.9")
Weight with rotator and link	850 kg (1 870 lbs)

### FELLING / CUTTING

Max felling/cutting diameter	550 mm (21.7")
Saw bar	640 mm (25.2")
Saw unit	SuperCut 100S
Saw motor	Parker/Bucher
Saw chain tensioning	Automatic
Chain oil tank volume	8 l (2.1 US gal)

### HYDRAULIC SYSTEM

Max pressure	280 bar (74 US gal/min)
Flow for optimal production	160 l/min (42.3 US gal/min)
Valve block	Purpose built hydraulic

### FEEDING

Hydraulic motors, feed arms	400/500 cm <sup>3</sup>
Number of hydraulic motors	2 pcs
Feeding force	25/27 kN (5620/6070 lbf)
Feeding speed, 240 l/min	6.0/4.7 m/s (19.7/15.4 ft/s)
Max open, feeding wheels	450 mm (17.7")

### DELIMITING

Max opening, upper knives	560 mm (22")
Optimal productivity	10-35 cm (3.9-13.8")
Delimiting diameter tip to tip	400 mm (15.7")
Number of static knives	1 pc
Number of movables knives	3 pcs
Max tilt angle	140°

### ROTATOR OPTIONS

Indexator AV12S, H122	
BBR 15H	

Logset TOC-MD 2

### MEASURING DEVICE

### RECOMMENDED BASE MACHINE

Wheeled base	14-20 t (30 860-44 090 lbs)
Tracked base	15-21 t (33 070-46 300 lbs)

### OPTIONAL ACCESSORIES

Contact your local dealer for more information



# T

Logset TH55 especially for mid-sized feed systems

The harvest timber because with the par its short fram is measured sensors, whi measureme measuring v adjust the p a wide rang measuring v ensures a pr measureme conditions. T can be equi with custom knives, feedi wheels, and software for efficient bur processing.

# TH55

## FOR THINNING OPERATIONS AND SMALL-SIZED CLEARFELLS

Logset TH55 is a light, compact, and highly productive harvester head designed especially for thinning and clearfelling of mid-sized timber. It is an excellent choice for mid-sized harvesters with long out-reach cranes. The three-roller synchronized feed system ensures powerful and precise feeding in all conditions.

The harvester head performs perfectly on bent timber because of its long front knives equipped with the parallel rod, its large tilt angle, and its short frame. The diameter of the timber is measured from the front knives with two sensors, which guarantees a reliable diameter measurement. The fully hydraulic length-measuring wheel, with the possibility to adjust the pressure, together with a wide range of different measuring wheel options ensures a precise length measurement in all conditions. The head can be equipped with custom knives, feeding wheels, and software for efficient bunch processing.



### LOGSET TH55

#### DIMENSIONS

Width, head open	1420 mm (55.9")
Width, head closed	1200 mm (47.2")
Height to top knife	1300 mm (51.2")
Height with rotator and link	1820 mm (71.7")
Weight with rotator and link	1000 kg (2 200 lbs)

#### FELLING / CUTTING

Max felling/cutting diameter	650 mm (25.6")
Saw bar	750 mm (29.5")
Saw unit	SuperCut 100S
Saw motor	Parker/Bucher
Saw chain tensioning	Automatic
Chain oil tank volume	8 l (2.1 US gal)

#### HYDRAULIC SYSTEM

Max pressure	280 bar (74 US gal/min)
Flow for optimal production	160 l/min (42.3 US gal/min)
Valve block	Purpose built hydraulic

#### FEEDING

Hydraulic motors, feed arms	500/630 cm <sup>3</sup>
Hydraulic motors, chassis	315/400 cm <sup>3</sup>
Number of hydraulic motors	4 pcs
Feeding force	27/31 kN (6070/6969 lbf)
Feeding speed, 300 l/min	6.0/4.7 m/s (19.7/15.4 ft/s)
Max open, feeding wheels	630 mm (24.8")

#### DELIMBING

Max opening, upper knives	680 mm (26.8")
Max opening, rear knives	-
Optimal productivity	10-40 cm (3.9-15.7")
Delimiting diameter tip to tip	450 mm (17.7")
Number of static knives	1 pc
Number of movables knives	3 pcs
Max tilt angle	140°

#### ROTATOR OPTIONS

Indexator AV12S, H122	
BBR 15H	

#### MEASURING DEVICE

Logset TOC-MD 2	
-----------------	--

#### RECOMMENDED BASE MACHINE

Wheeled base	14-18 t (30 860-39 680 lbs)
Tracked base	16-20 t (35 270-44 090 lbs)

#### OPTIONAL ACCESSORIES

Contact your local dealer for more information

mm (49.2")  
mm (43.3")  
mm (45.3")  
mm (66.9")  
kg (1 870 lbs)

mm (21.7")  
mm (25.2")  
rCut 100S  
er/Bucher  
matic  
.1 US gal)

bar (74 US gal/min)  
min (42.3 US gal/min)  
ose built hydraulic

500 cm<sup>3</sup>  
s  
7 kN (5620/6070 lbf)  
.7 m/s (19.7/15.4 ft/s)  
mm (17.7")

mm (22")  
5 cm (3.9-13.8")  
mm (15.7")

ator AV12S, H122  
15H  
et TOC-MD 2

t (30 860-44 090 lbs)  
t (33 070-46 300 lbs)



OWN WEIGHT **1<sup>T</sup>**

BASE MACHINE **14-18<sup>T</sup>** FEED SPEED **6/4,7<sup>M/S</sup>**

# TH65

## VERSATILE HARVESTER HEAD WITH FOUR DELIMBING KNIVES

Logset TH65 3.3 is the most versatile harvester head in the Logset range. It is suitable for forests of all sizes and types, and the harvester head works both with hardwood as well as softwood. Thanks to the four delimiting knives, the harvester head easily delimits all branches from the base to the top of the tree. Strong frame construction withstands wear and tear.

**VERSION 3.3** Lot has been done to make good even better again: More power and speed to the operator with redesigned valve block, more efficient saw valve, and feeding valve spool. The new TH65 makes better performance in all aspects: Better usability, faster sawing, measuring, and feeding. Maintenance is easier with redesigned housing.



OPTIMAL PRODUCTIVITY  
DIAMETER: 10 - 45 cm

MAXIMUM CUTTING  
DIAMETER: 72 cm

OWN WEIGHT **1,30<sup>T</sup>**

BASE MACHINE **14-18<sup>T</sup>**

FEED SPEED **6/4,7<sup>M/S</sup>**

## LOGSET TH65/TH65 3.3

### DIMENSIONS

Width, head open	1590 mm (62.6")
Width, head closed	1200 mm (47.2")
Height to top knife	1380 mm (54.3")
Height with rotator and link	1900 mm (74.8")
Weight with rotator and link	1300 kg (2 860 lbs)

### FELLING / CUTTING

Max felling/cutting diameter	720 mm (28.3")
Saw bar	820 mm (32.3")
Saw unit	SuperCut 100S
Saw motor	Parker/Bucher
Saw chain tensioning	Automatic
Chain oil tank volume	8 l (2.1 US gal)

### HYDRAULIC SYSTEM

Max pressure	280 bar (74 US gal/min)
Flow for optimal production	200 l/min (52.8 US gal/min)
Valve block	Purpose built hydraulic

### FEEDING

Hydraulic motors, feed arms	680/820 cm <sup>3</sup>
Hydraulic motors, chassis	315/400 cm <sup>3</sup>
Number of hydraulic motors	4 pcs (2 pcs for TH65X)
Feeding force	29/32 kN (6519/7194 lbf)
Feeding speed, 300 l/min	6.0/4.7 m/s (19.7/15.4 ft/s)
Max open, feeding wheels	630 mm (24.8")

### DELIMITING

Max opening, upper knives	680 mm (26.8")
Max opening, rear knives	750 mm (29.5")
Optimal productivity	10-45 cm (3.9-17.7")
Delimiting diameter tip to tip	450 mm (17.7")
Number of static knives	2 pcs
Number of movables knives	4 pcs
Max tilt angle	140°

### ROTATOR OPTIONS

Indexator AV12S, H122	
BBR 15H	

### MEASURING DEVICE

Logset TOC-MD 2	
-----------------	--

### RECOMMENDED BASE MACHINE

Wheeled base	14-18 t (30 860-39 680 lbs)
Tracked base	16-20 t (35 270-44 090 lbs)

### OPTIONAL ACCESSORIES

Contact your local dealer for more information



OPTIMAL PRODUCTIVITY  
DIAMETER: 15 - 45 cm

MAXIMUM CUTTING  
DIAMETER: 82 cm

# TH75

## A GENTLE EMBRACE FOR FINAL FELLING

As the average stem size grows, the Logset TH75 harvester head is your choice. The model is designed for a larger young growing forest and for final felling. The harvester head frame is longer and more sturdy than the TH65 harvester head. The shape of the saw housing and the efficient saw's motor make it easier for felling large, wide trees, which makes felling more controlled.

The wear resistance of TH75 harvester head delimiting knives steel is in a class of its own. Delimiting knives keep even large trees "tenderly embraced" throughout felling and feeding. The sturdy frame structure of the harvester head lasts from father to son. The harvester head is suitable for installation on a harvester or an excavator with forestry equipment.



## LOGSET TH75/TH75X

### DIMENSIONS

Width, head open	1700 mm (66.9")
Width, head closed	1370 mm (53.9")
Height to top knife	1500 mm (59.1")
Height with rotator and link	2030 mm (79.9")
Weight with rotator and link	1500 kg (3 300 lbs)

### FELLING / CUTTING

Max felling/cutting diameter	800 mm (31.5")
Saw bar	900 mm (35.4")
Saw unit	SuperCut 100S
Saw motor	Parker/Bucher
Saw chain tensioning	Automatic
Chain oil tank volume	8 l (2.1 US gal)

### HYDRAULIC SYSTEM

Max pressure	280 bar (74 US gal/min)
Flow for optimal production	200 l/min (52.8 US gal/min)
Valve block	Purpose built hydraulic

### FEEDING

Hydraulic motors, feed arms	680/820 cm <sup>3</sup>
Hydraulic motors, chassis	315/400 cm <sup>3</sup>
Number of hydraulic motors	4 pcs (2 pcs for TH75X)
Feeding force	29/32 kN (6519/7194 lbf)
Feeding speed, 300 l/min	5.6/4.4 m/s (18.4/14.4 ft/s)
Max open, feeding wheels	740 mm (29.1")

### DELIMBING

Max opening, upper knives	780 mm (30.7")
Max opening, rear knives	840 mm (33.1")
Optimal productivity	15-50 cm (5.9-19.7")
Delimiting diameter tip to tip	550 mm (21.7")
Number of static knives	2 pcs
Number of movables knives	4 pcs
Max tilt angle	148°

### ROTATOR OPTIONS

Indexator AV12S, H122	
BBR 15H	

### MEASURING DEVICE

Logset TOC-MD 2	
-----------------	--

### RECOMMENDED BASE MACHINE

Wheeled base	18-22 t (39 680-48 500 lbs)
Tracked base	19-24 t (41 890-52 910 lbs)

### OPTIONAL ACCESSORIES

Contact your local dealer for more information

OWN WEIGHT **1,50<sup>T</sup>** BASE MACHINE **18-22<sup>T</sup>** FEED SPEED **5,6/4,4<sup>M/S</sup>**

# TH85

## BUILT FOR LARGE SCALE CLEARFELL HARVESTING

Logset TH85 is designed for felling, feeding, and cross-cutting trees between 80 cm and 4 cm in diameter. Three feeding wheels and four hydraulic motors provide an impressive feeding force with even the most difficult trees. Its total weight of 2 100 kg makes for a reliable structure in terms of chassis, knives, and pivots. The saw unit can be equipped with either 0,404" or 3/4" pitch saw chains and up to a 1-meter saw bar.

Logset TH85 has all the elements needed for a great cutting experience: performance and efficiency. As a standard, all the heads in the TH range come with the TOC-MD 2 measuring device. The user interface allows you to easily use and adjust features such as proportional knife control, automatic cross-cutting, and feeding speed. The seamless integration of TOC-MD 2 with the head guarantees high productivity.



## LOGSET TH85

### DIMENSIONS

Width, head open	1900 mm (74.8")
Width, head closed	1600 mm (63")
Height to top knife	1850 mm (72.8")
Height with rotator and link	2400 mm (94.5")
Weight with rotator and link	2100 kg (4 630 lbs)

### FELLING / CUTTING

Max felling/cutting diameter	800 mm (31.5")
Saw bar	950 mm (37.4")
Saw unit	SuperCut 150
Saw motor	Bucher 25 or 32 cm <sup>3</sup>
Saw chain tensioning	Automatic
Chain oil tank volume	8 l (2.1 US gal)

### HYDRAULIC SYSTEM

Max pressure	280 bar (74 US gal/min)
Flow for optimal production	300 l/min (79.3 US gal/min)
Valve block	Purpose built hydraulic

### FEEDING

Hydraulic motors, feed arms	940 cm <sup>3</sup>
Hydraulic motors, chassis	470 cm <sup>3</sup>
Number of hydraulic motors	4 pcs
Feeding force	37 kN (8318 lbf)
Feeding speed, 300 l/min	4,2 m/s (13.8 ft/s)
Max open, feeding wheels	840 mm (33.1")

### DELIMBING

Max opening, upper knives	1000 mm (39.4")
Max opening, rear knives	1100 mm (43.3")
Optimal productivity	40-60 cm (15.7-23.6")
Delimiting diameter tip to tip	580 mm (22.8")
Number of static knives	2 pcs
Number of movables knives	4 pcs
Max tilt angle	150°

### ROTATOR OPTIONS

Indexator H182	
----------------	--

### MEASURING DEVICE

Logset TOC-MD 2	
-----------------	--

### RECOMMENDED BASE MACHINE

Wheeled base	25-30 t (55 110-66 140 lbs)
Tracked base	22-28 t (48 500-61 730 lbs)

### OPTIONAL ACCESSORIES

Contact your local dealer for more information

# T

Logset TH85 is designed for felling, feeding, and cross-cutting trees between 80 cm and 4 cm in diameter. Three feeding wheels and four hydraulic motors provide an impressive feeding force with even the most difficult trees. Its total weight of 2 100 kg makes for a reliable structure in terms of chassis, knives, and pivots. The saw unit can be equipped with either 0,404" or 3/4" pitch saw chains and up to a 1-meter saw bar.

Logset TH85 has all the elements needed for a great cutting experience: performance and efficiency. As a standard, all the heads in the TH range come with the TOC-MD 2 measuring device. The user interface allows you to easily use and adjust features such as proportional knife control, automatic cross-cutting, and feeding speed. The seamless integration of TOC-MD 2 with the head guarantees high productivity.



OWN WEIGHT **2,1<sup>T</sup>**

BASE MACHINE **25-30<sup>T</sup>** FEED SPEED **4,2<sup>MS</sup>**

# TH95 **LARGEST AND STRONGEST HEAD DESIGNED FOR TRACK BASED MACHINES**

Logset TH95 is the largest head in the TH range. It is a heavy-duty harvester head for processing large volumes. Its compact structure and versatility make it suitable for many kinds of logging operations. TH95 is primarily designed for use with track-based machines with high lifting capacity and slewing power. Its strong chassis, tilt, and rotator easily absorb the extreme stresses produced by these machines. The chassis and delimiting knives create minimal friction against the tree stem. The reduced stress during feeding means that the fuel consumption is low and the engine and hydraulic components have a longer lifespan. The geometry of the feeding arms and delimiting knives is optimized for large and heavy timber. This guarantees efficient feeding of bent and heavily branched trees.

Logset TH95 works seamlessly with the TOC-MD 2 measuring device. This union of strength and intelligence provides reliable measurements, easy adjustments, and unbeatable productivity.



OWN WEIGHT **2,90<sup>T</sup>** BASE MACHINE **30<sup>T</sup>**

FEED SPEED **3,9<sup>MS</sup>**

## LOGSET TH95

### DIMENSIONS

Width, head open	2040 mm (80.3")
Width, head closed	1640 mm (64.6")
Height to top knife	2070 mm (81.5")
Height with rotator and link	2700 mm (106.3")
Weight with rotator and link	2900 kg (6 390 lbs)

### FELLING / CUTTING

Max felling/cutting diameter	900 mm (35.4")
Saw bar	1000 mm (39.4")
Saw unit	SuperCut 300
Saw motor	Parker F12-40
Saw chain tensioning	Automatic
Chain oil tank volume	18 l (4.8 US gal)

### HYDRAULIC SYSTEM

Max pressure	280 bar (74 US gal/min)
Flow for optimal production	300 l/min (79.3 US gal/min)
Valve block	Purpose built hydraulic

### FEEDING

Hydraulic motors, feed arms	1120 cm <sup>3</sup>
Hydraulic motors, chassis	500 cm <sup>3</sup>
Number of hydraulic motors	4 pcs
Feeding force	40 kN (8992 lbf)
Feeding speed, 300 l/min	3,9 m/s (12.8 ft/s)
Max open, feeding wheels	880 mm (34.6")

### DELIMITING

Max opening, upper knives	1040 mm (40.9")
Max opening, rear knives	1200 mm (47.2")
Optimal productivity	40-60 cm (15.7-23.6")
Delimiting diameter tip to tip	620 mm (24.4")
Number of static knives	2 pcs
Number of movables knives	4 pcs
Max tilt angle	144°

### ROTATOR OPTIONS

Indexator IR12	Logset TOC-MD 2
----------------	-----------------

### RECOMMENDED BASE MACHINE

Wheeled base	-
Tracked base	30 t (66 130 lbs)

### OPTIONAL ACCESSORIES

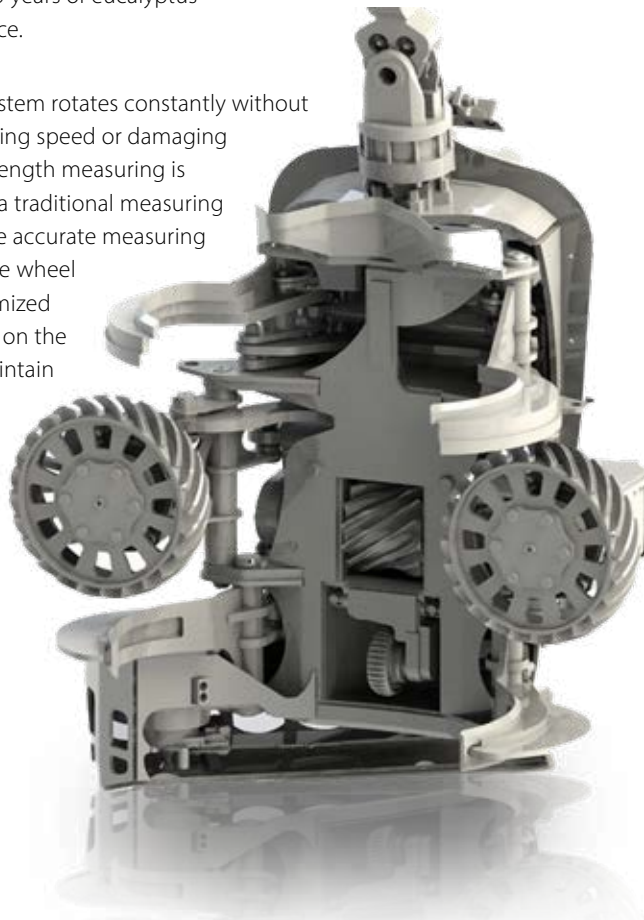
Contact your local dealer for more information

# TH65 EUCA

## FOR EFFICIENT EUCALYPTUS DEBARKING.

TH65 EUCA head is optimized especially for eucalyptus tree debarking. The delimiting knives profile surrounds the tree stem optimally on all diameters which ensures that the bark is peeled off the stem efficiently and with minimum friction. The angle and shape of the feed wheels and roller lamellas have been optimized during 25 years of eucalyptus debarking experience.

During feeding the stem rotates constantly without decreasing the feeding speed or damaging the tree fibers. The length measuring is accomplished with a traditional measuring wheel unit to ensure accurate measuring in all conditions. The wheel itself has been optimized to reduce the stress on the structure and to maintain a "spot-on" length measuring in all eucalyptus species.



OWN WEIGHT **1,3<sup>T</sup>**

BASE MACHINE **14-18<sup>T</sup>** FEED SPEED **6/4,7<sup>M/S</sup>**

## LOGSET TH65 EUCA

### DIMENSIONS

Width, head open	1590 mm (62.6")
Width, head closed	1200 mm (47.2")
Height to top knife	1380 mm (54.3")
Height with rotator and link	1900 mm (74.8")
Weight with rotator and link	1300 kg (2 860 lbs)

### FELLING / CUTTING

Max felling/cutting diameter	720 mm (28.3")
Saw bar	820 mm (32.3")
Saw unit	SuperCut 100S
Saw motor	Parker/Bucher
Saw chain tensioning	Automatic
Chain oil tank volume	8 l (2.1 US gal)

### HYDRAULIC SYSTEM

Max pressure	280 bar (74 US gal/min)
Flow for optimal production	200 l/min (52.8 US gal/min)
Valve block	Purpose built hydraulic

### FEEDING

Hydraulic motors, feed arms	680/820 cm <sup>3</sup>
Hydraulic motors, chassis	315/400 cm <sup>3</sup>
Number of hydraulic motors	4 pcs
Feeding force	29/32 kN (6519/7194 lbf)
Feeding speed, 300 l/min	6.0/4.7 m/s (19.7/15.4 ft/s)
Max open, feeding wheels	630 mm (24.8")

### DELIMITING

Max opening, upper knives	680 mm (26.8")
Max opening, rear knives	750 mm (29.5")
Optimal productivity	10-45 cm (3.9-17.7")
Delimiting diameter tip to tip	450 mm (17.7")
Number of static knives	2 pcs
Number of movables knives	4 pcs
Max tilt angle	140°

### ROTATOR OPTIONS

Indexator AV12S, H122  
BBR 15H

### MEASURING DEVICE

Logset TOC-MD 2

### RECOMMENDED BASE MACHINE

Wheeled base	14-18 t (30 860-39 680 lbs)
Tracked base	16-20 t (35 270-44 090 lbs)

### OPTIONAL ACCESSORIES

Contact your local dealer for more information

## LOGSET TH65 EUCA

### DIMENSIONS

Width, head open	1590 mm (62.6")
Width, head closed	1200 mm (47.2")
Height to top knife	1380 mm (54.3")
Height with rotator and link	1900 mm (74.8")
Weight with rotator and link	1300 kg (2 860 lbs)

### FELLING / CUTTING

Max felling/cutting diameter	720 mm (28.3")
Saw bar	820 mm (32.3")
Saw unit	SuperCut 100S
Saw motor	Parker/Bucher
Saw chain tensioning	Automatic
Chain oil tank volume	8 l (2.1 US gal)

### HYDRAULIC SYSTEM

Max pressure	280 bar (74 US gal/min)
Flow for optimal production	200 l/min (52.8 US gal/min)
Valve block	Purpose built hydraulic

### FEEDING

Hydraulic motors, feed arms	680/820 cm <sup>3</sup>
Hydraulic motors, chassis	315/400 cm <sup>3</sup>
Number of hydraulic motors	4 pcs
Feeding torque	29/32 kN (6519/7194 lbf)
Feeding speed, 300 l/min	6.0/4.7 m/s (19.7/15.4 ft/s)
Max open, feeding wheels	630 mm (24.8")

### DELIMITING

Max opening, upper knives	680 mm (26.8")
Max opening, rear knives	750 mm (29.5")
Optimal productivity	10-45 cm (3.9-17.7")
Delimiting diameter tip to tip	450 mm (17.7")
Number of static knives	2 pcs
Number of movables knives	4 pcs
Max tilt angle	140°

### ROTATOR OPTIONS

Indexator AV12S, H122  
BBR 15H

### MEASURING DEVICE

Logset TOC-MD 2

### RECOMMENDED BASE MACHINE

Wheeled base	14-18 t (30 860-39 680 lbs)
Tracked base	16-20 t (35 270-44 090 lbs)

### OPTIONAL ACCESSORIES

Contact your local dealer for more information

CA

mm (62.6")  
 mm (47.2")  
 mm (54.3")  
 mm (74.8")  
 kg (2 860 lbs)

mm (28.3")  
 mm (32.3")  
 rCut 100S  
 er/Bucher  
 matic  
 .1 US gal)

bar (74 US gal/min)  
 /min (52.8 US gal/min)  
 ose built hydraulic

820 cm<sup>3</sup>  
 400 cm<sup>3</sup>  
 s  
 2 kN (6519/7194 lbf)  
 .7 m/s (19.7/15.4 ft/s)  
 mm (24.8")

mm (26.8")  
 mm (29.5")  
 5 cm (3.9-17.7")  
 mm (17.7")  
 s  
 s

xator AV12S, H122  
 15H  
 et TOC-MD 2

3 t (30 860-39 680 lbs)  
 0 t (35 270-44 090 lbs)

formation

## LOGSET TH75 EUCA

### DIMENSIONS

Width, head open	1700 mm (66.9")
Width, head closed	1370 mm (53.9")
Height to top knife	1500 mm (59.1")
Height with rotator and link	2030 mm (79.9")
Weight with rotator and link	1500 kg (3 300 lbs)

### FELLING / CUTTING

Max felling/cutting diameter	800 mm (31.5")
Saw bar	900 mm (35.4")
Saw unit	SuperCut 100S
Saw motor	Parker/Bucher
Saw chain tensioning	Automatic
Chain oil tank volume	8 l (2.1 US gal)

### HYDRAULIC SYSTEM

Max pressure	280 bar (74 US gal/min)
Flow for optimal production	200 l/min (52.8 US gal/min)
Valve block	Purpose built hydraulic

### FEEDING

Hydraulic motors, feed arms	680/820 cm <sup>3</sup>
Hydraulic motors, chassis	315/400 cm <sup>3</sup>
Number of hydraulic motors	4 pcs
Feeding torque	29/32 kN (6519/7194 lbf)
Feeding speed, 300 l/min	5.6/4.4 m/s (18.4/14.4 ft/s)
Max open, feeding wheels	740 mm (29.1")

### DELIMBING

Max opening, upper knives	780 mm (30.7")
Max opening, rear knives	840 mm (33.1")
Optimal productivity	15-50 cm (5.9-19.7")
Delimiting diameter tip to tip	550 mm (21.7")
Number of static knives	2 pcs
Number of movables knives	4 pcs
Max tilt angle	148°

### ROTATOR OPTIONS

Indexator AV12S, H122	
BBR 15H	

### MEASURING DEVICE

Logset TOC-MD 2	
-----------------	--

### RECOMMENDED BASE MACHINE

Wheeled base	18-22 t (39 680-48 500 lbs)
Tracked base	19-24 t (41 890-52 910 lbs)

### OPTIONAL ACCESSORIES

Contact your local dealer for more information

# TH75 EUCA



MS

OWN WEIGHT **1,5<sup>T</sup>**

BASE MACHINE **18-22<sup>T</sup>** FEED SPEED **5,6/4,4<sup>MS</sup>**



# POWER. PRODUCTIVITY. REAL SOLUTIONS TO SUSTAINABLE FORESTRY.

**FOREST MACHINES HAVE** gone through some tremendous changes during the past couple of decades. They're stronger, more productive and greener than ever before. Modern forest machine is not just a machine. It is a factory that produces amounts of wood that horsemen cannot imagine 50 years ago.

**SUSTAINABLE FORESTRY** is not only pair of words. At Logset, we are driven by energy-efficient logging with every cell we have. We know that nobody loves the forest more than the ones who spend their whole life there. That's why we listen carefully to every single word we hear from the field. Just as we have done last 30 years.

**WE ARE COMMITTED** to stand with every Logset operator and his/her welfare. Days are long and work is hard. We are here to make it nicer, better, enjoyable, and more productive. We are here to make those days to unbroken chain, that looks good at every aspect.

**LOGSET**  
SIMPLY BETTER

LOGSET OY, HÄNNISENTIE 2, FI-66530 KOIVULAHTI, FINLAND. 08-2023

We reserve the right to make changes without prior notice. All technical specifications are for guidance only.  
The pictures and diagrams do not always show standard versions of the machines.  
Machine colors in the pictures may vary due to different year models.